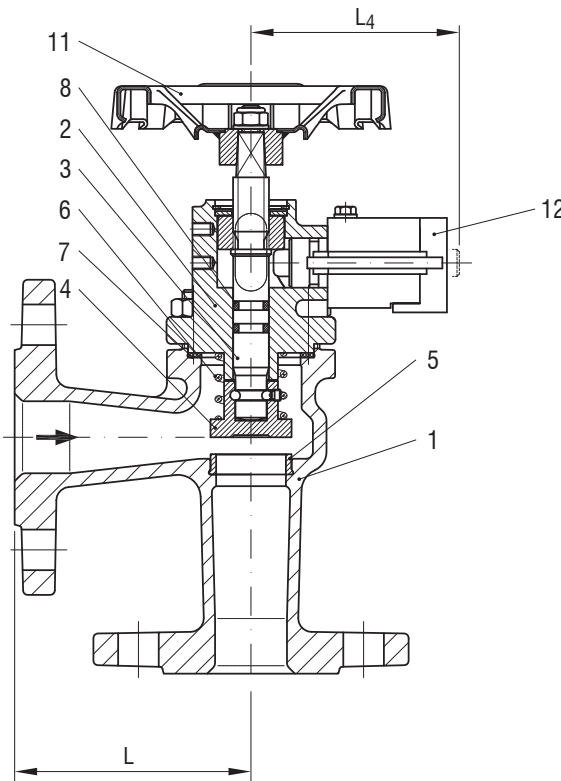


Schnellschlussventil PN 16

**Sphäroguss, Eckform
 federbelastet, kompakte Bauweise**

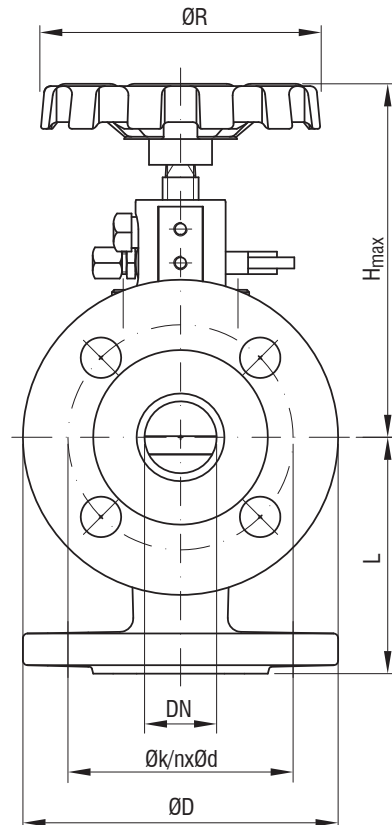
- Flanschbohrungen nach DIN EN 1092-1 PN 16
- Verwendung: Verschiedene Arten von Flüssigkeiten, wie z.B. Heiz-, Diesel-, Schweröl und Wasser
- Betätigungsarten:
 Manuell am Ventil,
 fernbedient hydraulisch und pneumatisch



Quick-closing Valve PN 16

**nodular cast iron, angle pattern
 spring-loaded, compact design**

- flange drilling acc. to DIN EN 1092-1 PN 16
- application: for different kind of liquids, mainly fuel oil, diesel oil, heating oil and water
- operation mode:
 locally manual operation,
 remotely controlled hydraulically and pneumatically



| Pos. item | Bezeichnung denomination | AW 33514 | | Pos. item | Bezeichnung denomination | AW 33514 | |
|-----------|--------------------------|-------------------|-----------|-----------|--------------------------|---------------------|--------|
| 1 | Gehäuse / body | EN-GJS-400-18U-LT | EN-JS1049 | 6 | Feder / spring | SH | 1.1200 |
| 2 | Oberteil / bonnet | EN-GJS-400-18U-LT | EN-JS1049 | 7 | Dichtung / gasket | Novapress Universal | |
| 3 | Spindel / stem | X20Cr13 | 1.4021 | 8 | O-Ring / O-ring | FPM (Viton) | |
| 4 | Kegel / disc | X20Cr13 | 1.4021 | 11 | Handrad / hand wheel | FePO3 | 1.0347 |
| 5 | Sitzring / seat bush | X20Cr13 | 1.4021 | 12 | Auslöser / actuator | 9SMn28K | 1.0715 |

| DN | L | H _{max} | l ₄ | ØD | ØR | Øk | n | Ød | ≈kg |
|----|-----|------------------|----------------|-----|-----|-----|---|----|------|
| 15 | 90 | 155 | 93 | 95 | 125 | 65 | 4 | 14 | 4,3 |
| 20 | 95 | 155 | 93 | 105 | 125 | 75 | 4 | 14 | 5,0 |
| 25 | 100 | 160 | 93 | 115 | 125 | 85 | 4 | 14 | 6,0 |
| 32 | 105 | 160 | 93 | 140 | 125 | 100 | 4 | 18 | 7,0 |
| 40 | 115 | 170 | 93 | 150 | 125 | 110 | 4 | 18 | 9,0 |
| 50 | 125 | 167 | 93 | 165 | 125 | 125 | 4 | 18 | 11,5 |

| AW | DN | Betriebsdruck working pressure max. | Temperatur temperature max. |
|--------------|----------------|---|-----------------------------------|
| 33514 | 15 - 50 | 16 bar | 140°C |

ACHTUNG: Es gelten Einschränkungen bei Installation auf der Druckseite einer Pumpe! Bitte Rücksprache mit ARMATUREN-WOLFF.
 ATTENTION: On the pressure side of a pump restrictions apply! Please contact ARMATUREN-WOLFF for technical advice.

Schnellschlussventil PN 16

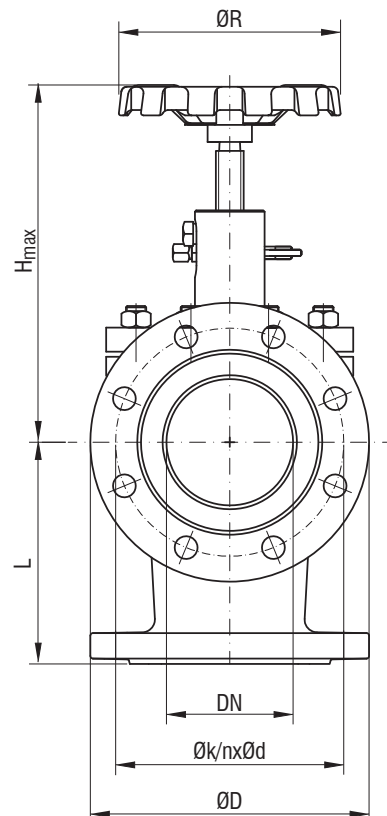
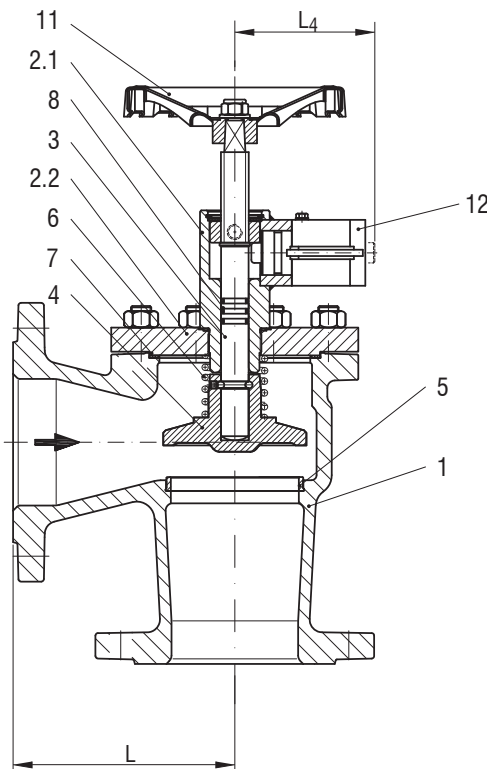
**Sphäroguss, Eckform
 federbelastet, kompakte Bauweise**

- Flanschbohrungen nach DIN EN 1092-1 PN 16
- Verwendung: Verschiedene Arten von Flüssigkeiten, wie z.B. Heiz-, Diesel-, Schweröl und Wasser
- Betätigungsarten:
 Manuell am Ventil,
 fernbedient hydraulisch und pneumatisch

Quick-closing Valve PN 16

**nodular cast iron, angle pattern
 spring-loaded, compact design**

- flange drilling acc. to DIN EN 1092-1 PN 16
- application: for different kind of liquids, mainly fuel oil, diesel oil, heating oil and water
- operation mode:
 locally manual operation,
 remotely controlled hydraulically and pneumatically



| Pos. item | Bezeichnung denomination | AW 33514 | | Pos. item | Bezeichnung denomination | AW 33514 | |
|-----------|--------------------------|-------------------|-----------|-----------|--------------------------|---------------------|--------|
| 1 | Gehäuse / body | EN-GJS-400-18U-LT | EN-JS1049 | 6 | Feder / spring | SH | 1.1200 |
| 2.1 | Hülse / sleeve | S355GT | 1.0580 | 7 | Dichtung / gasket | Novapress Universal | |
| 2.2 | Deckel / cover | EN-GJS-400-18U-LT | EN-JS1049 | 8 | O-Ring / O-ring | FPM (Viton) | |
| 3 | Spindel / stem | X20Cr13 | 1.4021 | 11 | Handrad / hand wheel | FePO3 | 1.0347 |
| 4 | Kegel / disc | X20Cr13 | 1.4021 | 12 | Auslöser / actuator | 9SMn28K | 1.0715 |
| 5 | Sitzring / seat bush | X20Cr13 | 1.4021 | | | | |

| DN | L | H _{max} | l ₄ | ØD | ØR | Øk | n | Ød | ≈kg |
|------|-----|------------------|----------------|-----|-----|-----|----|----|------|
| 65 | 145 | 265 | 124 | 185 | 175 | 145 | 4 | 18 | 18,0 |
| 80 | 155 | 270 | 124 | 200 | 175 | 160 | 8 | 18 | 22,0 |
| 100 | 175 | 285 | 124 | 220 | 175 | 180 | 8 | 18 | 31,5 |
| 125 | 200 | 330 | 129 | 250 | 225 | 210 | 8 | 18 | 46,0 |
| 150 | 225 | 360 | 129 | 285 | 250 | 240 | 8 | 22 | 60,0 |
| 200* | 275 | 550 | 2x124 | 340 | 300 | 295 | 12 | 22 | |

*: mit 2 Auslösern / with 2 actuators

| AW | DN | Betriebsdruck working pressure max. | Temperatur temperature max. |
|--------------|-----------------|---|-----------------------------------|
| 33514 | 65 - 150 | 16 bar | 140°C |

ACHTUNG: Es gelten Einschränkungen bei Installation auf der Druckseite einer Pumpe! Bitte Rücksprache mit ARMATUREN-WOLFF.
 ATTENTION: On the pressure side of a pump restrictions apply! Please contact ARMATUREN-WOLFF for technical advice.